



Walton Service Management System (Central)
 Chandra, Katakori, Gazipur, Bangladesh, e-mail: support@waltonbd.com
 Service center's address & others information may be
 changed to ensure quality customer service for all.

Please contact us for any service/information: 16267 or 09612316267



waltonbd.com

WALTON
at every home

User Manual
 Room Heater

Where Warmth Meets Serenity



Model: WRH-PTC007

Read all the instructions carefully before you use the appliance
 and keep it for future use.



CONTENT

Product Feature 1
 Technical Parameters 1
 Product Structure 1
 User Instruction 2
 Cautions 2
 Cleaning & Maintenance 3
 Technical Parameters 3

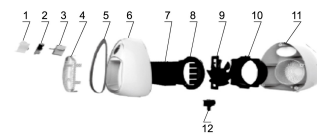
PRODUCT FEATURE:

- Walton PTC ceramic heater, safety and energy saving heat up quickly.
- 3 adjustments: cold, warm easy to use.
- Temperature control function: ABS environment friendly flame retardant materials and overheating protection.
- Large wind speed: large angle of the wind and comfortable warm wind effect.
- Automatic power cut off function.

TECHNICAL PARAMETERS:

Item No.	Rated Voltage	Frequency	Rated Power
WRH-PTC007	220 V~	50Hz	1,000W

PROCT STRUCTURE:



- | | |
|--------------------|-------------------------------|
| 1. Rotary Knob | 7. PTC |
| 2. Switch Cover | 8. The Outside Casing of PTC |
| 3. Switch | 9. Fan |
| 4. Metal Fence | 10. The Outside Casing of Fan |
| 5. Decorative Ring | 11. Back Case |
| 6. Front Case | 12. The Switch of Dumping |

Caution: Please check if there is any damage in the first times of operation.
 Ensure that no noise and severe shaking while in operation:

USER INSTRUCTION:

- Put this product plug inserts in a 220V-50Hz over 15A power socket.
- Adjust the mode by turning knob, (i) Fan Mode, (ii) Warm Mode, (iii) Heat Mode
 2.1 Mode ii the power is 500W
 2.2 Mode iii the power is 1000W
- Turn the knob to 'O', turn off the heater

CAUTIONS:

- Please check if power supply outlet meet with product requirements or specification.
- This product is strictly forbidden in flammable explosive environment; such as full of dust, oil mist and room temperature should not exceed 30°C.
- Do not use this product in the bath tub, shower or a swimming pool.
- Before cleaning and maintenance, pull the plug off and leave the heater until it cool down.
- After usage, leave the room or long term not in use, ensure that turn off the power switch and unplug the power plug.
- Do not use if the power cord is damaged, contact retailer or seller for service.
- Do not modify or try to connect with other device such as timer.
- Never use wet hand to operate heater or pull the plug, risk of electrical shock.
- Keep out of reach from children.
- This product is suitable for indoor use only.
- Before moving this product, you should pull the plug and wait until it cool down.
- Do not use placed this product close to curtain and furniture, place should be at least 1 meter away from the wall and furniture. Ensure nothing block the air in/out.
- Do not use and store in humid place or dusty environment. To avoid corrosion and electrical shock.

Warning: To avoid overheating, covering the heater is prohibited.

CLEANING & MAINTENANCE:

- When not in use for a long time, please clean the product, after it dry, put it in the original packaging box.
- Before cleaning this product, please cut off power, wait until it be cool down.
- Do not rinse this product, use soft cloth to wipe on the product. Do not use gasoline, toluene solvent for cleaning.
- After cleaning, wait for the body completely dry before next use.

TECHNICAL PARAMETERS:

Fault	Reason	Troubleshooting
Not Operate	The power cord plug may loose	Check if the plug properly contact the power outlet
The cashing or power cable damage	-	Contact to the service center